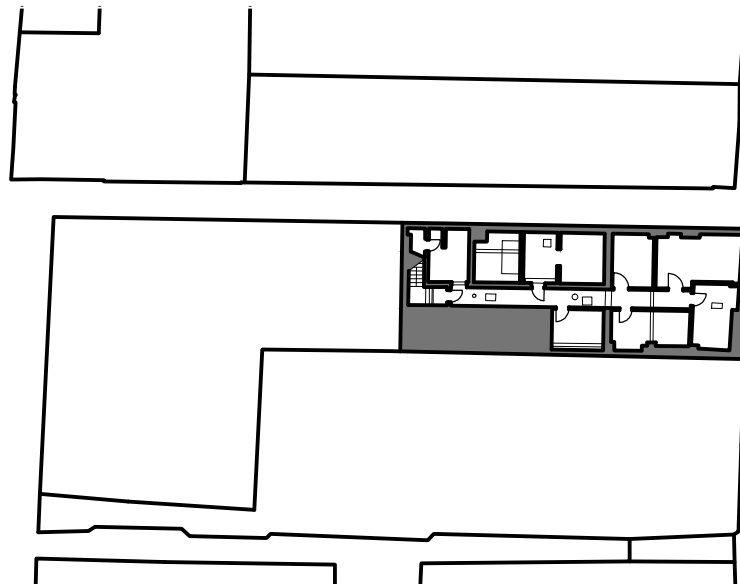


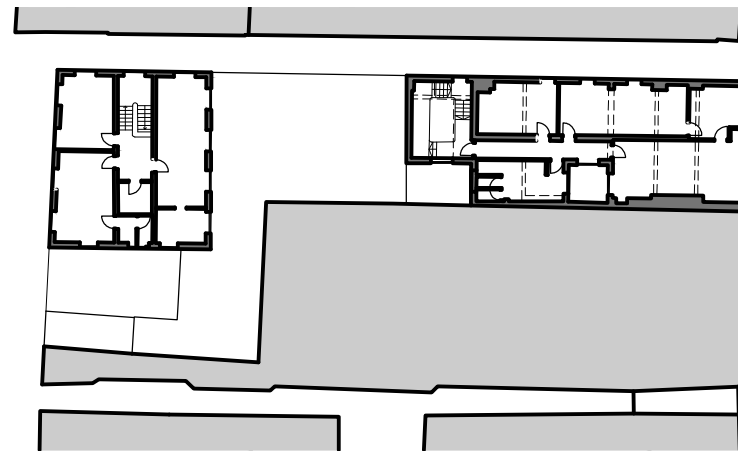
EXISTING



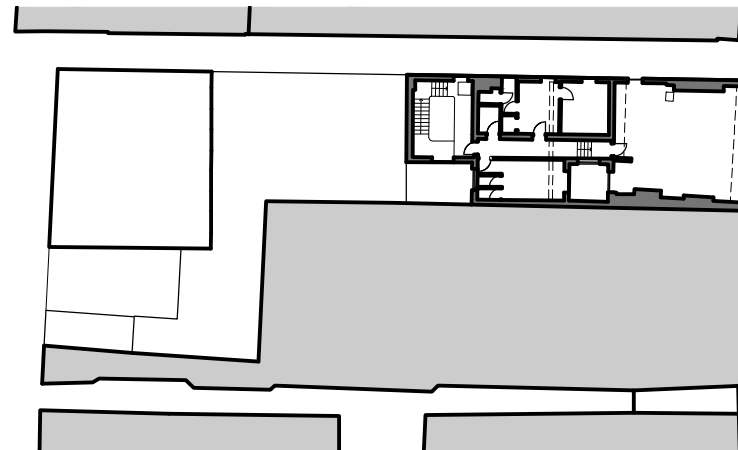
Basement Floor



Ground Floor



First Floor



Second Floor



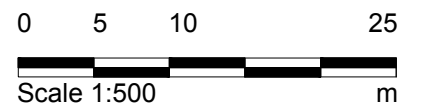
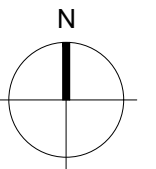
Market Thoroughfare Elevation



Cornhill Elevation



St. Andrew's South Street Elevation



- Notes
- Any dwg format drawing is to be read in conjunction with and at the scale of the accompanying pdf.
 - Where colours other than black or grey are used, the drawing must be plotted in colour.
 - For status 'C' (Construction) drawings all dimensions are to be checked on site by the contractor, scaling is for Local Authority purposes only.
 - Unless otherwise indicated, all dimensions are in millimeters.
 - All information on this drawing is to be read in conjunction with the relevant Donald Insall Associates specification and trade contractors' drawings and information by specialists.
 - In the event of any discrepancy, please contact us immediately.
 - This drawing may contain survey information by others and is to be used solely for the purposes for which it was issued.
 - These are uncontrolled documents issued for information purposes only. If you have any queries regarding the drawings, please contact DIA immediately.
 - Please note DIA cannot be held responsible for any errors arising from changes made to an uncontrolled dwg file.

Drawing Status

| | |
|---|--------------------|
| F | Feasibility |
| S | Sketch Design |
| P | Planning |
| B | Building Control |
| D | Design Development |
| M | Measurement |
| T | Tender |
| C | Construction |
| R | Record |

| Rev | Date | Dwn | Auth | Revision |
|-----|----------|-----|------|---------------|
| 0 | 02-03-18 | MXV | TOB | Initial Issue |

| | | | |
|---|--|---|---|
| Donald Insall Associates Chartered Architects and Historic Building Consultants | | 12 Devonshire Street London W1G 7AB (+44) 020 7245 9888 london@insall-architects.co.uk | |
| 17-18 Cornhill, Bury St. Edmunds | | Project CBSE | No SK000 |
| Existing Floor Plans and Elevations | | Scale (A3) 1:500 | Status F Revision 0 |